

## 1898 NCR Catalogue

### Section on Detail-Adding National Cash Registers

Originally priced from \$15 to \$250

Ed- Detail adders are the beginning of the NCR register legacy and are still available to collect. They are the simplest to work on and restore and are fun to study in their simplicity. Values of the registers in this section vary greatly from a hugely valuable wooden and model zero or one register in the range of \$5000-\$10,000 to the common model two or eight which might only bring \$500 with no top sign. Happy hunting.

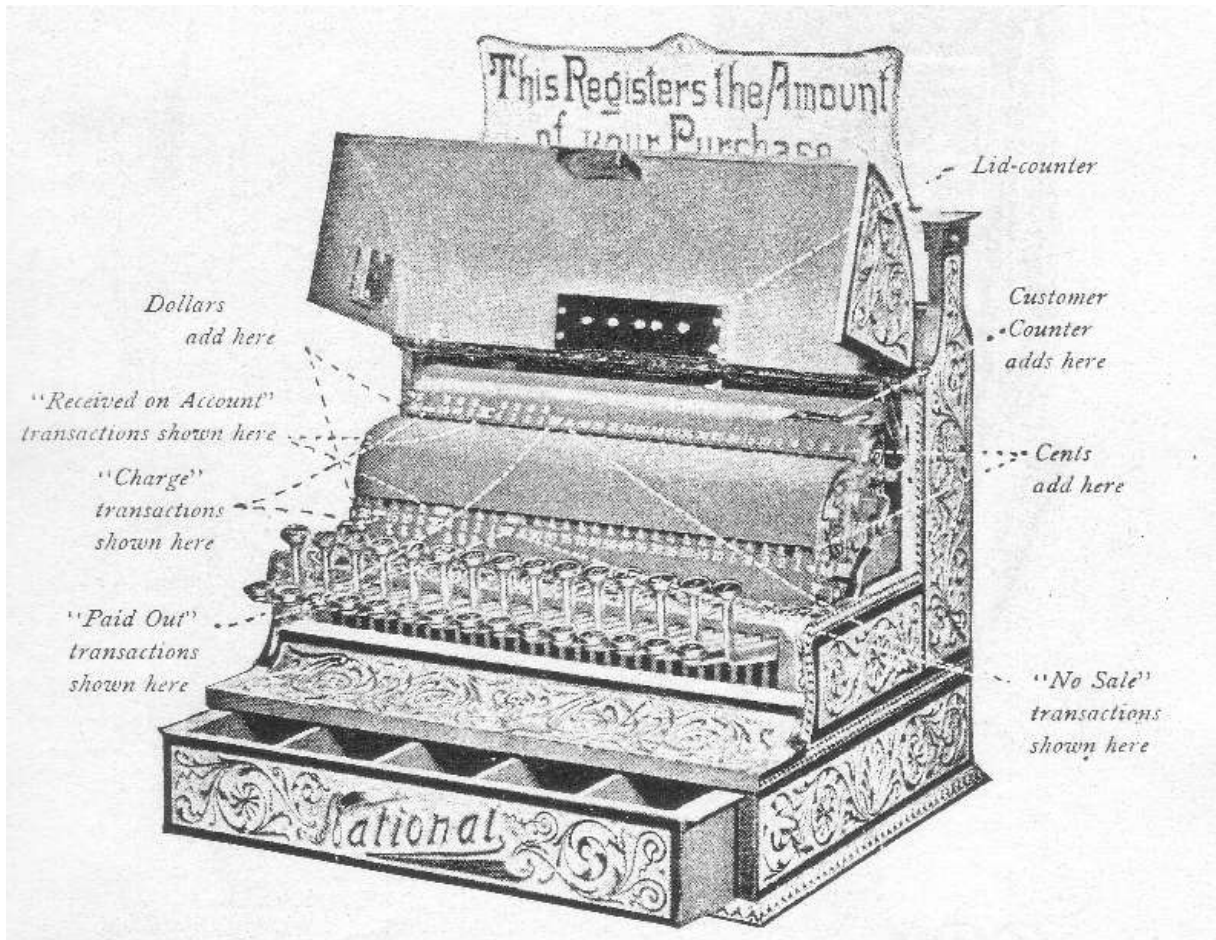
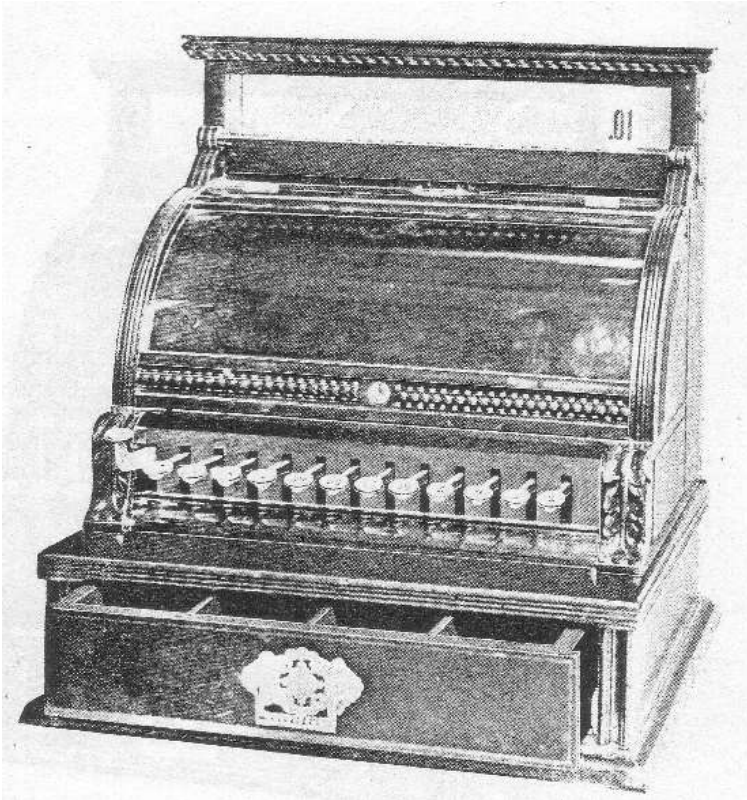


Diagram showing the adding mechanism of the Detail-Adding National Cash Register.



### **No. 17 Detail-Printing Cash Register.**

Ed- These early wooden cases are highly collectable and rare.

Dimensions: 16 1/2 inches wide, 15 inches deep, 18 5/8 inches high.



*Fixed Arrangement of Keys.*

Twelve registering keys, of fixed denominations.

Painted wooden case, light maroon, with nickel trimmings.

Prints upon paper the amount represented by the key or keys pressed. Paper strip can be changed or removed when desired.

Without latest improvements.



### **No. 18 Detail-Adder Cash Register.**

Dimensions: 16 1/2 inches wide, 15 1/2 inches deep, 21 1/4 inches high.



Standard Arrangement of Keys.

Twenty-five registering keys, of any denominations desired.  
Painted wooden case, bronze green, with nickel trimmings.

Without latest improvements. Adding mechanism can be reset to zero.



### **No. 19 Detail-Adding Cash Register.**

Dimensions: 16 1/2 inches wide, 15 inches deep, 18 5/8 inches high.

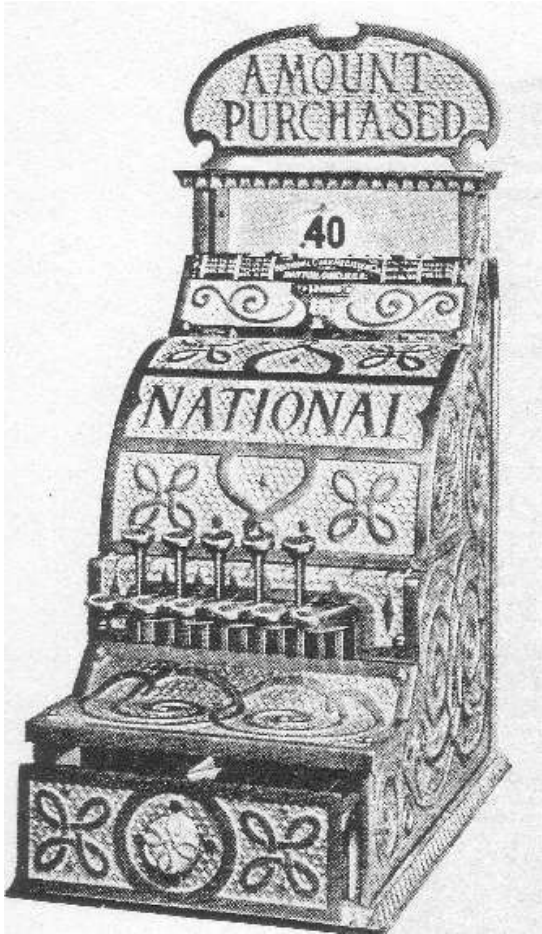


Standard Arrangement of Keys.

Twenty-five registering keys, of any denominations desired. Painted wooden case, dark brown, nickel trimmings.

Without latest improvements.

Adding mechanism can be reset to zero.



### **No. 11 Detail-Adding Cash Register.**

Ed- These register with the Ionic pattern in cast iron can still be found today.

Dimensions: 9 inches wide, 15 1/4 inches deep, 21 3/4 inches high.



Standard Arrangement of Keys.

Eleven registering keys, of any denominations desired. Iron cabinet, nickel plated, special design.

Narrow base, with small cash-drawer.

Without latest improvements.

Adding mechanism can be reset to zero.



No. 13 Detail-Adding Cash Register.

Ed- These register with the lonic pattern in cast iron can still be found today.

Dimensions: 16 1/2 inches Wide, 15 1/2 inches deep, 21 1/4 inches high.



Standard Arrangement of Keys.

Twenty registering keys, of any denominations desired.

Iron cabinet, nickel plated, special design.

Without latest improvements.

Adding mechanism can be reset to zero.



**No. 13 Detail-Adding Cash Register.**

Ed- These register with the Ionic pattern in cast iron can still be found today.  
 Dimensions: 16 1/2 inches Wide, 15 1/2 inches deep, 21 1/4 inches high.

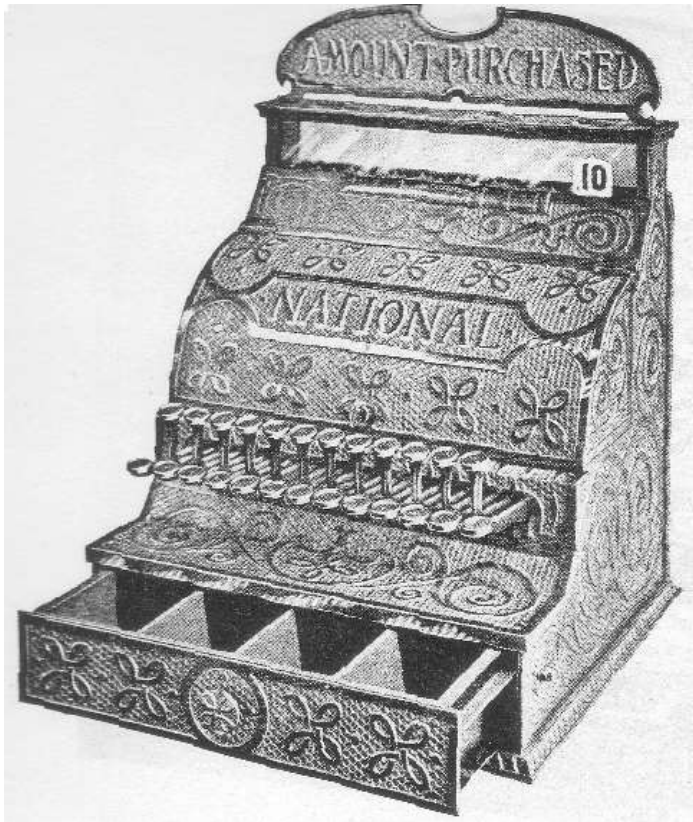


Standard Arrangement of Keys.

Twenty registering keys, of any denominations desired. Iron cabinet, nickel plated, special design.  
 Without latest improvements.

Adding mechanism can be reset to zero.

Page 42



### **No. 14 Detail-Adding Cash Register.**

Dimensions: 16 1/2 inches Wide, 15 1/2 inches deep, 21 1/4 inches high.

Ed- These register with the lonic pattern in cast iron can still be found today.



Standard Arrangement of Keys.

Twenty-five registering keys, of any denominations desired. Iron cabinet, nickel plated, special design.

Without latest improvements.

Adding mechanism can be reset to zero.

Page 43





### No. 15 Detail-Adding Cash Register.

Dimensions: 18 3/8 inches wide, 15 1/8 inches deep, 22 inches high.

Ed- These register with the lonic pattern in cast iron can still be found today.



Standard Arrangement of Keys.

Thirty registering keys, of any denominations desired. Iron cabinet, nickel plated, special design. Without latest improvements.

Adding mechanism can be reset to zero.

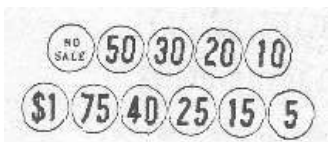
Page 44



### **No. 5 Detail-Adding Cash Register.**

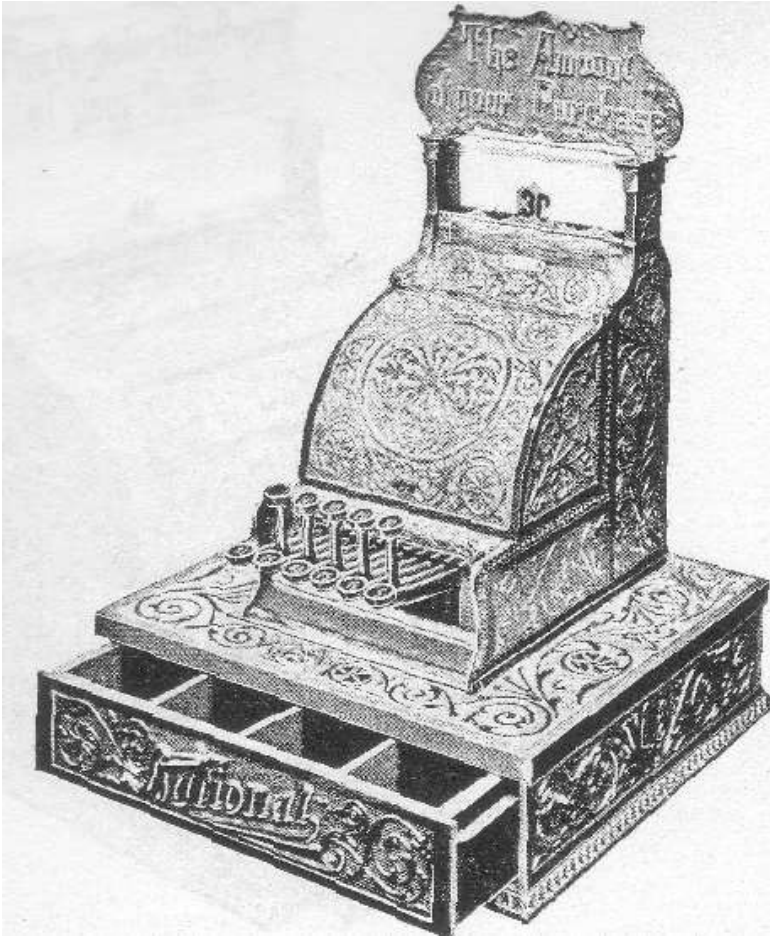
Dimensions: 8 7/8 inches Wide, 15 1/4 inches deep, 21 3/4 inches high.

Ed- The model 5 is easy to find in both scroll and Fleur-de-lis style case.



Standard Arrangement of Keys.

Eleven registering keys, of any denominations desired. High-grade case, scroll design. With all except most recent improvements. Adding mechanism can be reset to zero.



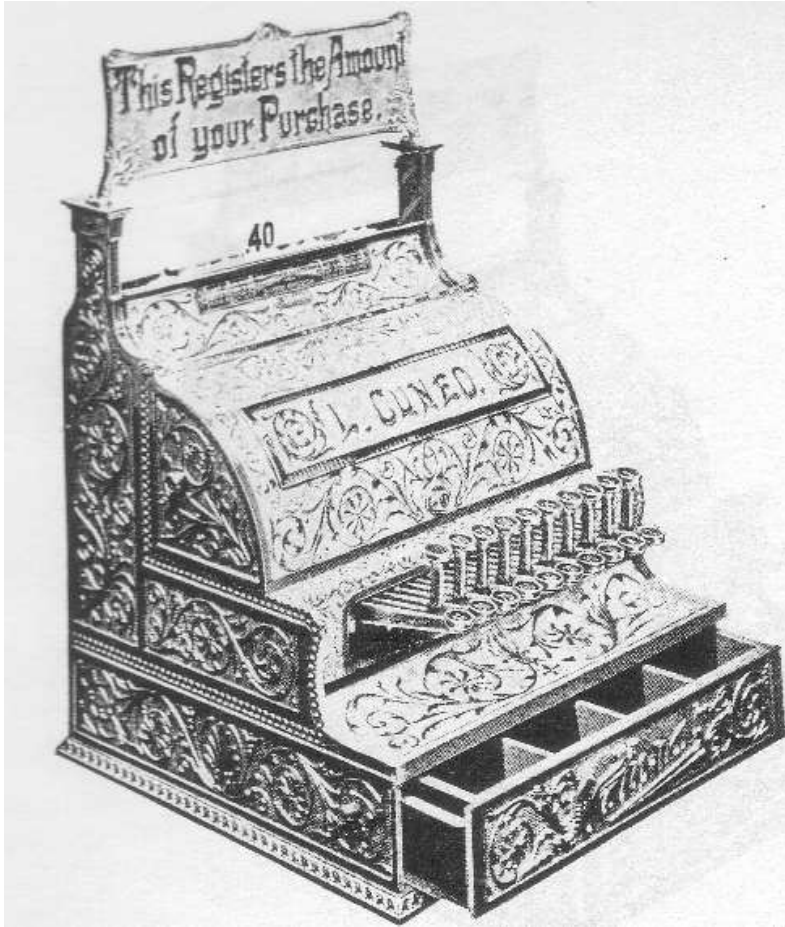
### **No. 6 Detail-Adding Cash Register.**

Dimensions: 15 7/8 inches Wide, 15 1/4 inches deep, 22 inches high.



Standard Arrangement of Keys.

Eleven registering keys, of any denominations desired. High-grade case, scroll design. With all except most recent improvements. Adding mechanism can be reset to zero.



### No. 7 Detail-Adding Cash Register.

Dimensions: 15 7/8 inches Wide, 15 inches deep, 22 inches high.

Ed- The model 7 and 8 are both fairly common and easy to find. They are a great start for a collector.



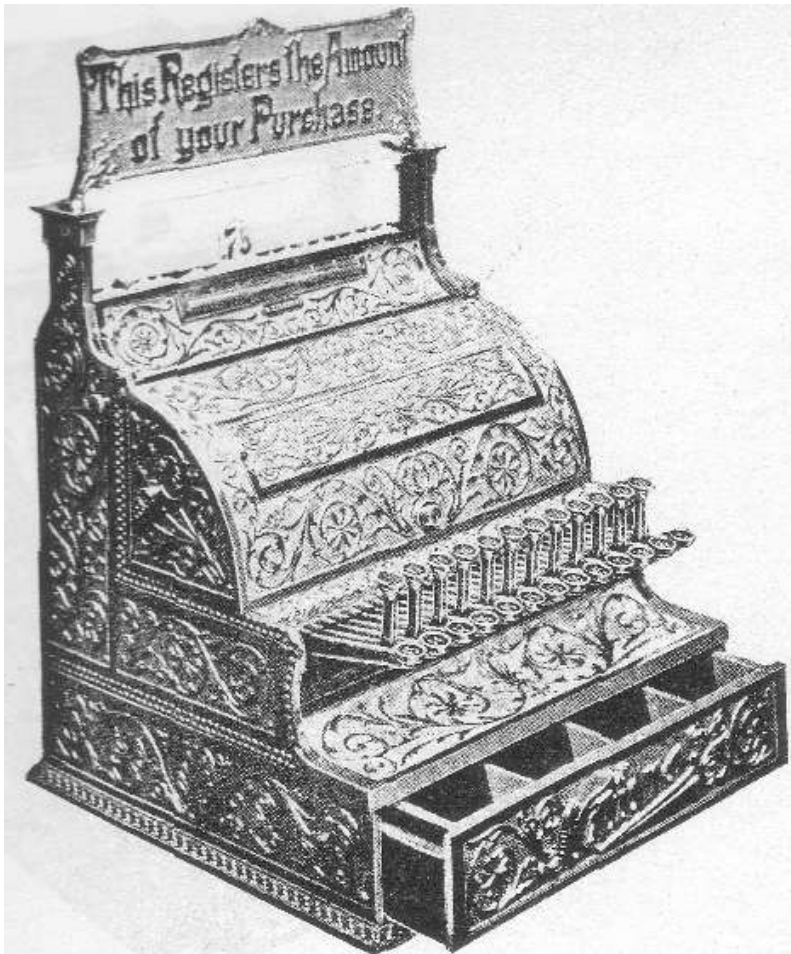
Standard Arrangement of Keys.

Twenty registering keys, of any denominations desired. High-grade case, scroll design.

With all except most recent improvements.

Adding mechanism can be reset to zero.

Page 47



### **No. 8 Detail-Adding Cash Register.**

Dimensions: 15 7/8 inches Wide, 15 1/4 inches deep, 22 1/4 inches high.

Ed- The model 7 and 8 are both fairly common and easy to find. They are a great start for a collector.



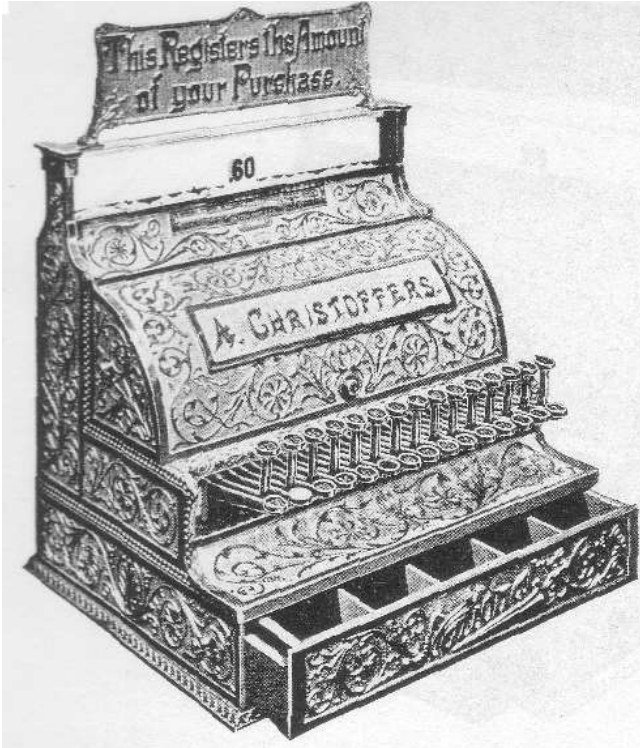
Standard Arrangement of Keys.

Twenty-five registering keys, of any denominations desired. High-grade case, scroll design.

With all except most recent improvements.

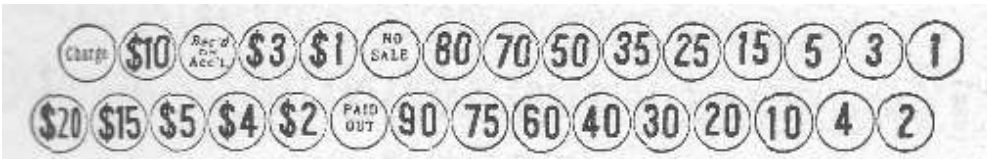
Adding mechanism can be reset to zero.

Page 48



### **No. 9 Detail-Adding Cash Register.**

Dimensions: 18 3/8 inches Wide, 15 1/8 inches deep, 22 3/8 inches high.



Standard Arrangement of Keys.

Thirty registering keys, of any denominations desired. High-grade case. scroll design. With all except most recent improvements. Adding mechanism can be reset to zero.



### **No. 10 Detail-Adding Cash Register.**

Dimensions: 23 1/2 inches Wide, 15 inches deep, 22 1/4 inches high.



Standard Arrangement of Keys.

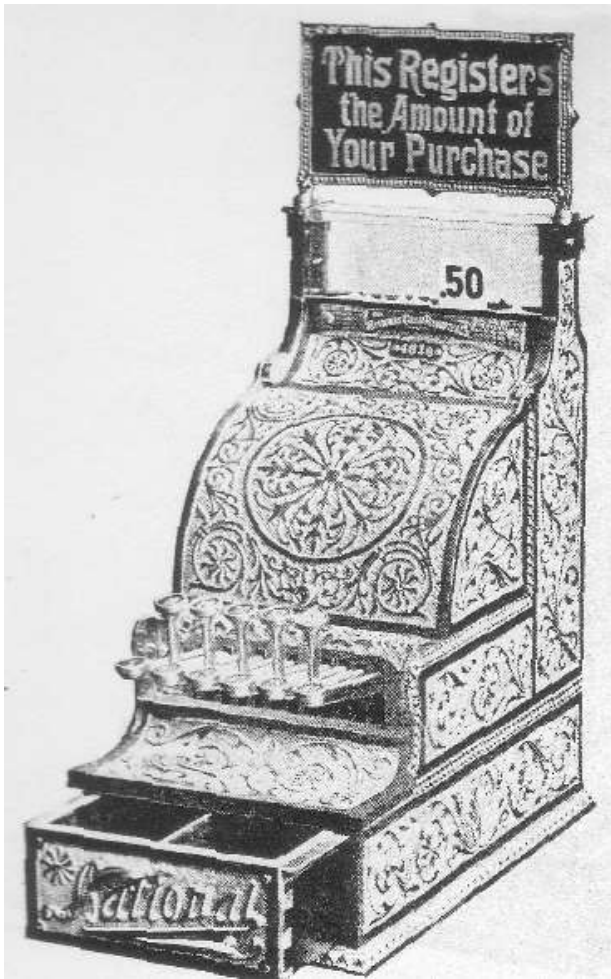
Forty registering keys, of any denominations desired.

High-grade case, scroll design.

With all except most recent improvements.

Adding mechanism can be reset to zero.

Page 50



### **No. 0 Detail-Adding Cash Register.**

Dimensions: 15 7/8 inches Wide, 15 1/4 inches deep, 22 1/4 inches high.

Ed- This is a grand master to collectors. They are rare and highly desired.



Standard Arrangement of Keys.

Eleven registering keys, of any denominations desired.

High-grade case, scroll design.

With all except most recent improvements.

Used in cigar stores and at soda-water fountains, bootblack stands etc.

Has small sized cash drawer.

Adding mechanism can be reset to zero.

Page 51





### **No. 1 Detail-Adding Cash Register.**

Dimensions: 15 3/4 inches Wide, 15 1/8 inches deep, 22 1/2 inches high.



Standard Arrangement of Keys.

Eleven registering keys, of any denominations desired. High-grade case, scroll design. With all latest improvements. Used in small cigar stores and at soda-water fountains, bootblack stands, etc.

Has large-sized cash-drawer.

Adding mechanism can be reset to zero.

Page 52



### **No. 1 1/2 Detail-Adding Cash Register.**

Dimensions: 16 1/2 inches Wide, 15 7/8 inches deep, 22 1/2 inches high.



Standard Arrangement of Keys.

Twenty registering keys, of any denominations desired. High-grade case, Fleur-de-lis design. With all latest improvements.

Adding mechanism can be reset to zero.



## No. 2 Detail-Adding Cash Register.

Dimensions: 16 1/2 inches Wide, 15 7/8 inches deep, 22 1/2 inches high.



Standard Arrangement of Keys.

Twenty-five registering keys of any denominations desired. High-grade case, Fleur-de-lis design.  
With all latest improvements.

Adding mechanism can be reset to zero.

Page 54



### **No. 3 Detail-Adding Cash Register.**

Dimensions: 18 3/8 inches Wide, 15 1/8 inches deep, 22 1/2 inches high.



Standard Arrangement of Keys.

Thirty registering keys, of any denominations desired.

Makes a record of cash sales, credit sales, money paid out, money received on account, and the number of times the cash-drawer is opened to make change.

High-grade case, scroll design.

With all latest improvements.

Adding mechanism can be reset to zero.

Page 55



#### **No. 4 Detail-Adding Cash Register.**

Dimensions: 23 3/8 inches Wide, 15 1/8 inches deep, 22 1/2 inches high.



Standard Arrangement of Keys.

Forty registering keys, of any denominations desired. Registers cash sales, and keeps a record of credit sales, money paid out, money received on account, and the number of times the cash-drawer is opened to make change. High-grade case, scroll design. With all latest improvements. Adding mechanism can be reset to zero. Special forms and uses of the NO. 4 Register are given on pages 60 and 61 -



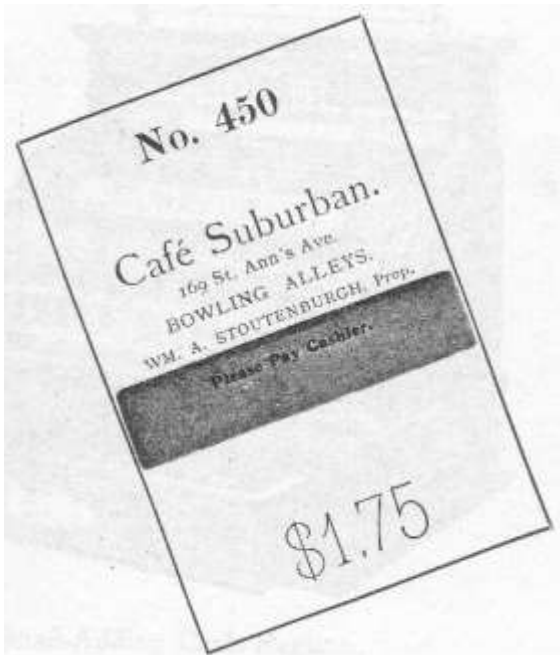
**Detail-Adding Cash Register WITH CHECK-PRINTING DEVICE.**

Ed- This feature would be very collectable.

The above illustration represents a NO. 2 Register with a device which prints the amount of the purchase on a paper check at the same time that a key of the register is pressed down. The check is held under the key by the operator. A second or third amount may be printed on the same check when a purchaser makes additional purchases.

Five thousand checks, size 2x3 inches, with appropriate matter printed on them, are furnished with each check device.

This device can be attached to our Detail-Adding Registers nos. 0 to 15, inclusive, to Key Total-Adding Registers Nos. 30 to 51 inclusive, and to Nos. 63 and 64.



Facsimile of Paper Check used on Key Cash Registers with check-printing device. Can be had with orange, yellow, blue, purple, green, red or pink band.



### **Detail-Adding Cash Register WITH WOOD CASE.**

Dimensions: 18 7/8 inches Wide, 15 1/8 inches deep, 24 inches high.

This illustration shows a NO. 3 Register in a wood case.  
This case is well made and handsomely finished.

When desired, we will furnish this style of case on any of our high-grade Detail-Adding or NO. 33 principle Key Total-Adding Registers. Adding mechanism can be reset to zero.

Page 59



Detail-Adding Cash Register USED BY CASHIER.  
Ed- This reverse drawer arrangement is very very rare.

The style of register shown above (No. 4 Detail-Adding) is placed on the counter or desk separating the cashier from the clerks and customers. The clerk registers the sale on the proper key and hands the money to the cashier, who deposits it in the drawer. The cash-drawer opens at the back of the register, as shown in the illustration. The amount registered is exhibited on both sides of the indicators, so that the clerk, the customer and the cashier can see it. Any of our cash registers may be arranged in this way.

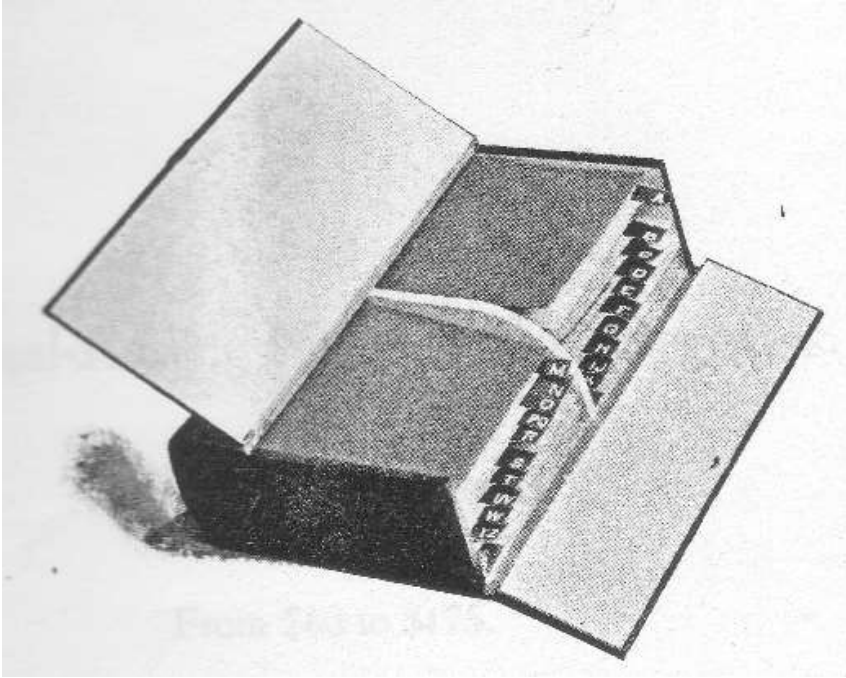




**No. 4 Detail-Adding Cash Register SHOWING DIVISION OF SALES**

Arranged to keep separate records of the sales in different lines of goods or departments. Any amounts or arrangements of amounts may be substituted for those shown.

The cash register shown above is arranged in three divisions for a drug store. It shows the amount of business transacted in the soda-water department, in the drugs and sundries department, and in the cigar department. Any kind of store can use this system. For example, an arrangement for a confectionery store would be ice cream-confectionery-soda -water. Any of our standard Detail-Adding Cash Registers may be arranged in this way, but the NO. 4 is best adapted to the system.



**"A" Filing Case.**

This Filing Case is conveniently arranged and made the proper size to accommodate the duplicate charge slips which are a part of our credit system. In a small store it will take the place of a customer's ledger.