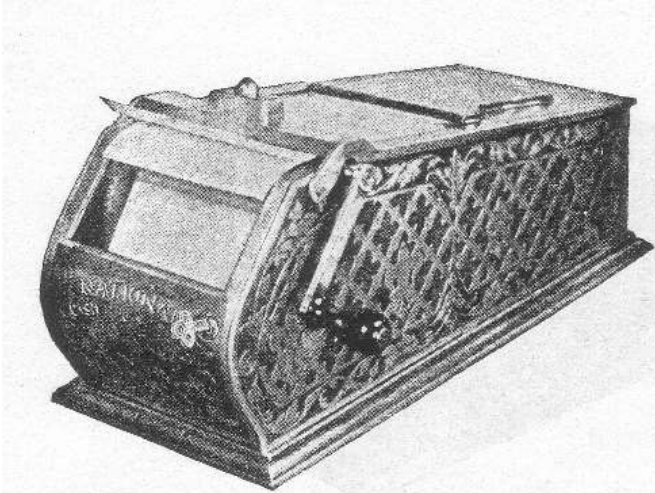


1898 NCR Catalogue
Section on Manifolding Autographic Registers
Originally priced from \$10 to \$40

Ed- These simple receipt writing autographics are still fairly common today. They are only very collectable because they are very beautiful when restored. Finding one complete or with original paper in it increases value. Ballpark values are around \$400-600



No. 225 Manifold Autographic Register.

Dimensions: 7 1/2 inches wide, 16 1/2, inches long, 7 1/2 inches high.

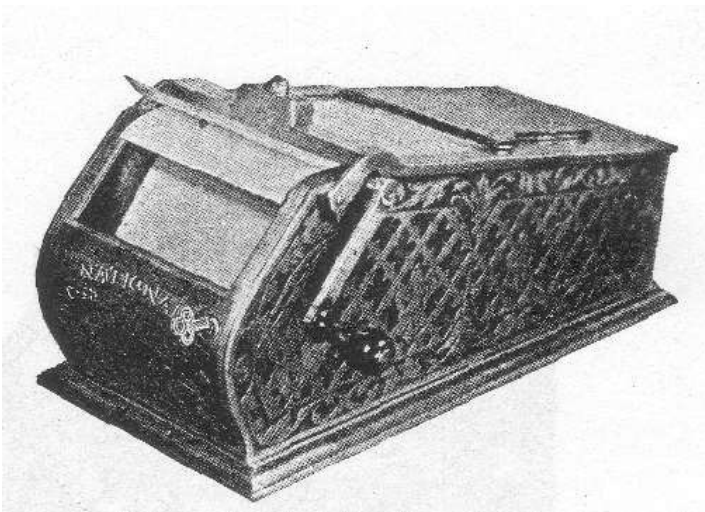
This register is equipped with three rolls of paper, the top sheet being printed and ruled in appropriate lengths.

When items are written on the printed slip, carbon sheets make exact copies upon the second and third strips. Upon turning the handle on the left side, the register issues two slips which may be torn off, while the third slip is rolled up within the case. The case being locked, access to the third record is allowed only to the proprietor.

The size of the slips used in this register is 4 1-4 inches wide by 5 inches long.

The cabinet is cast iron, nickel plated, small size. Its open design allows the rolls to be easily seen.

Page 21



No. 230 Manifolding Autographic Register.

SUMMARY

Dimensions: 7 1/2 inches wide, 16 1/2 inches long, 7 1/2 inches high.

This register is equipped with three rolls of paper and is operated in the same manner as the NO. 225. The two upper slips are torn off by the person operating the register. The third is a summary slip, which is rolled within the register.

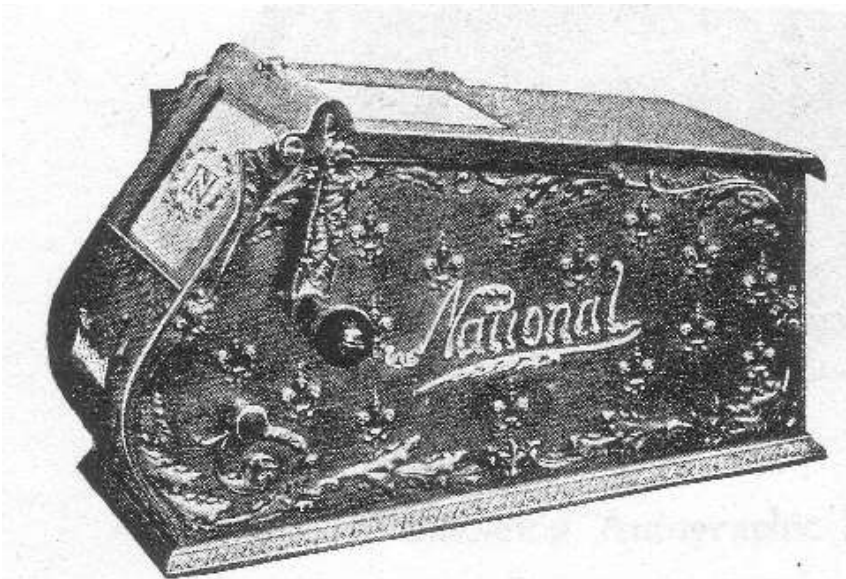
This summary slip shows the consecutive number, clerks' initials, and total amount of the sale.

These totals are arranged under each other, about one-half inch apart, for convenience in adding.

The slips are the same size as those on the NO. 225-4 1-4 inches wide and 5 inches long. The

cabinet is cast iron, nickel plated, small size.

Page 22



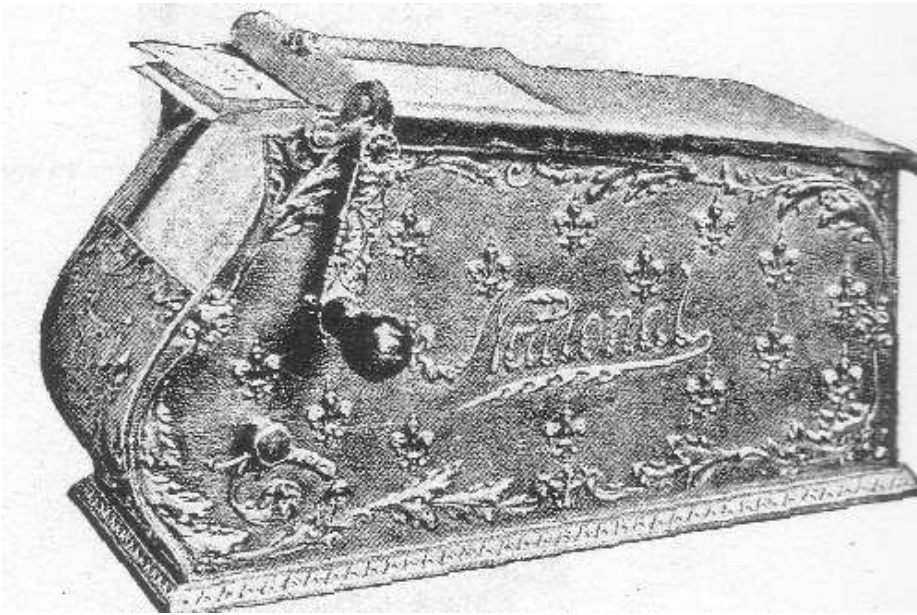
No. 223 Manifolding Autographic Register.

Dimensions: 10 3/4 inches wide, 16 1/2 inches long, 10 inches high.

This register is equipped and operated in the same manner as the NO. 225, except that upon turning the handle the register issues the three slips, which are then torn off by the operator. -

The size of the slips used in this register is 5 inches long by 4 1/4 inches wide.

Page 23



No. 226 Manifolding Autographic Register.

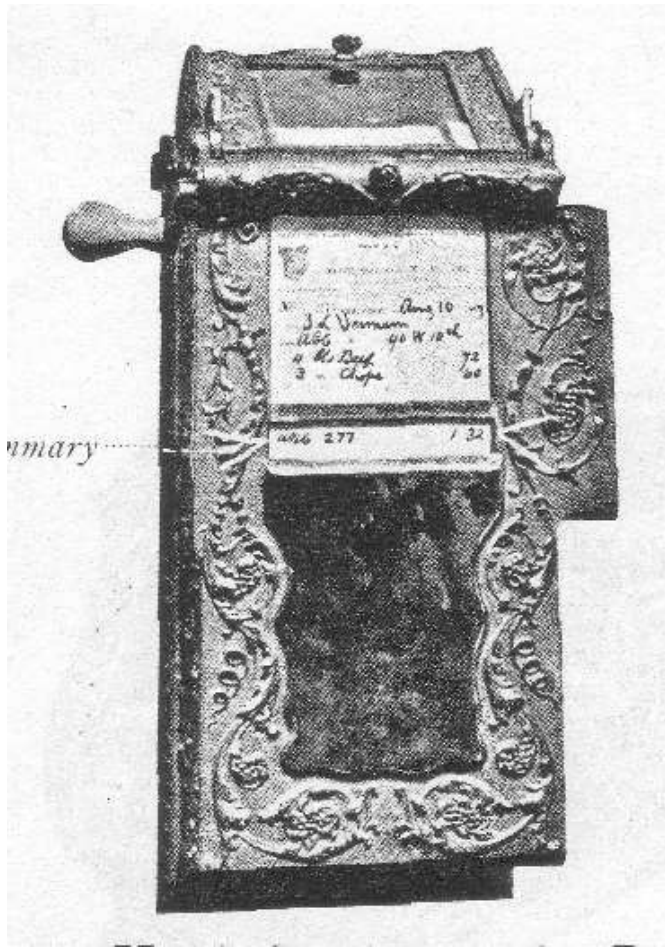
Dimensions: 10 1/4 inches wide, 16 1/2 inches long, 10 inches high.

This register is equipped and operated in the same manner as the NO. 225.

It can be arranged for two strips of paper-one to be issued and the other rolled up-or to issue three complete slips. These slips are 4 1/4 inches wide and 5 inches long.

These registers are of cast bronze, with the working parts of steel. All the exposed parts are nickel plated. The parts are interchangeable, and the ornamentation is highly artistic.

Page 24



No. 231 Manifolding Autographic Register.

SUMMARY

Dimensions: 10 1/4 inches wide, 16 1/2 inches long, 10 inches high

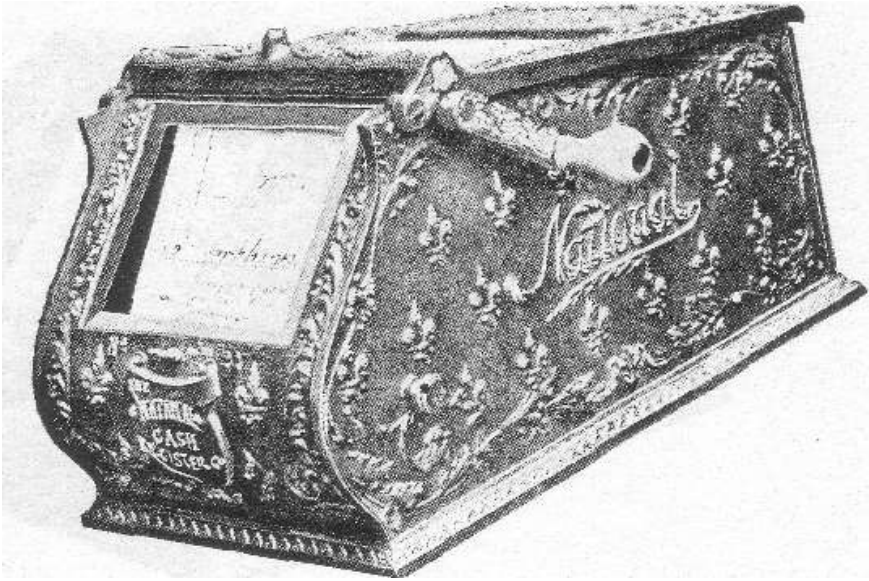
This register is equipped with three rolls of paper and is operated in the same manner as the No. 226. The two upper slips are torn off by the person operating the register. The third is a summary slip, which is rolled within the register.

This summary slip is intended to show the consecutive number, clerk's initial, and total amount of the sale. These totals are arranged under each other, about one-half inch apart, for convenience in adding. This makes a considerable saving in paper and assists in the rapid footing of the day's business.

The slips are 4 1/4 inches wide and 5 inches long.

The case is standard high-grade bronze, nickel plated, with the working parts in steel. It is handsomely finished and durable.

Page 25



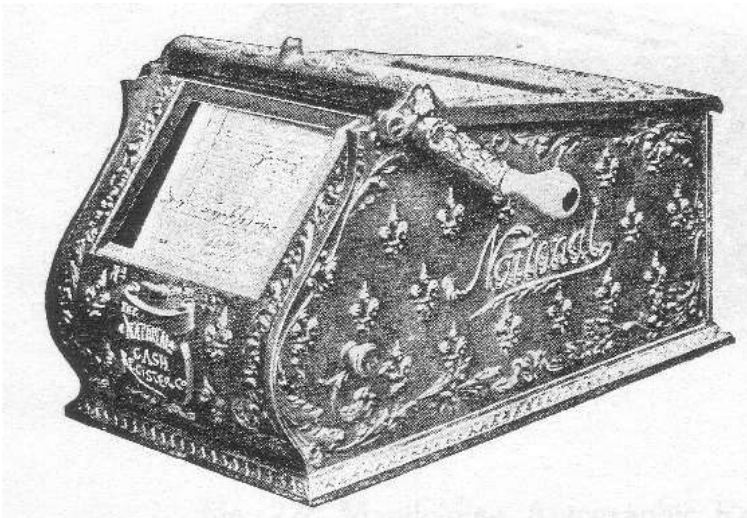
No. 227 Manifolding Autographic Register.

Dimensions: 13 inches wide, 16 1/2 inches long, 10 inches high.

This register is similar in equipment and operation to the No. 226. Each roll of paper contains 700 Slips 7 inches long and 6 1/2 inches wide.

The register is of cast bronze, with the working parts of steel. All the exposed parts are nickel plated. The parts are interchangeable, and the ornamentation is highly artistic.

Page 26



No. 232 Manifolding Autographic Register.

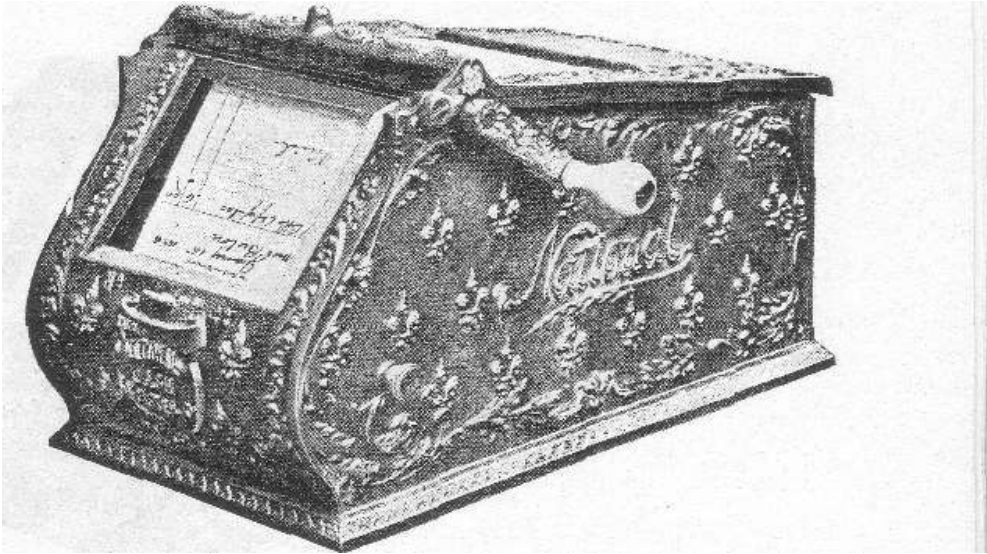
SUMMARY.

Dimensions: 13 inches wide, 16 1/2 inches long, 10 inches high.

This register is the same size as the No. 227 and is similar in equipment and operation to the No. 231.

Each roll of paper to be torn off contains 700 slips 7 inches long and 6 1/2 inches wide.

In form and finish it is similar to those preceding.

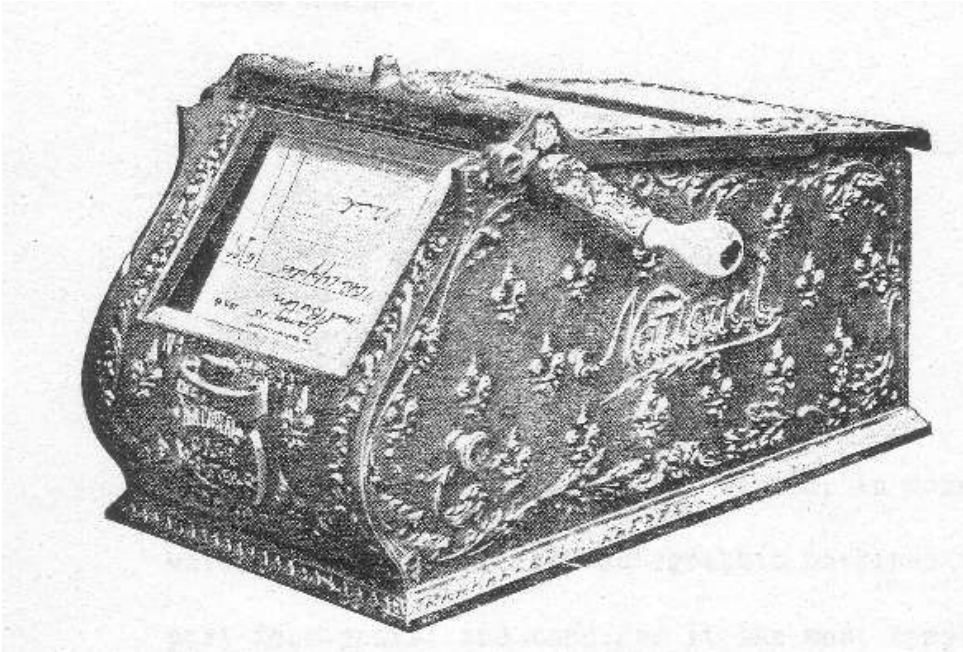


No. 228 Manifolding Autographic Register.

Dimensions: 14 1/2 inches wide, 16 1/2 inches long, ~ 10 1/2 inches high,
This register is similar to the No. 227, but larger. . Each roll of paper contains 700 slips 7 inches long and 8 1/2 inches wide.

The register is of cast bronze, with the working parts of steel. All the exposed parts are nickel-plated. The parts are interchangeable, and the ornamentation is highly artistic.

Page 28



No. 233 Manifolding Autographic Register.

SUMMARY

Dimensions: 14 1/2 inches wide, 16 1/2 inches long, 10 1/2 inches high.

This register is the same size as the NO. 228 and is similar in equipment and operation to the NO. 231.

The slips are 7 inches long and 8 1/2 inches wide.

The case is of bronze and similar in finish to those preceding.

Page 29